

COALA COVERS SAFE™

ANTIMICROBIAL PROTECTION

USE

Product designed for indoor use, at room temperature (10-35°C), and without direct exposure to UV light. Important: after installation, wait 48 hours before use.

PRELIMINARY TEST

Coala Coversafe™ has been developed to be removable stain on most substrates. Nevertheless, the diversity of substrates being very important, it is up to each user to check the suitability of the film with the substrate in question, by carrying out tests under the intended conditions of use. Do not apply Coala Coversafe™ if your substrate has a paint/varnish with insufficient adhesion. The seller declines liability in the event of damage to a substrate.

SUBSTRATE PREPARATION

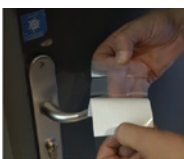
Before application, it is imperative to ensure that the substrate is smooth, clean, degreased and dry. If you clean the substrate with a product, make sure that the substrate is completely dry before applying the Coala Coversafe™ film.

DOOR HANDLE

1. Measure the length of the handle to be protected and cut off the excess film. If the circumference of the handle requires it, also re-cut the strips to prevent them from overlapping too much.



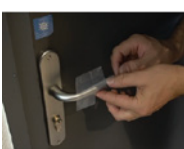
2. Remove the film liner.



3. Apply the film (uncut area) to the convex part of the handle (part rounded outwards). Apply pressure with your thumbs.



4. Apply the pre-cut strips one by one around the handle. Apply pressure with your thumbs. First apply the strips underneath, then the strips on top.



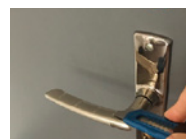
COVERSAFE™ LABEL

Highlight Coversafe™!



REMOVAL METHOD

1. To remove the film, remove it with a cutter and pull it out slowly.



2. In case of adhesive residues after removal, clean with a cloth soaked in acetone or alcohol (isopropyl, ethanol). Check before hand that the product used does not damage the substrate (paint...).

